

**NOTES**

1. All exposed metal surfaces shall be painted in accordance with **Std. Spec. Sect. 6-12.3(9)**.
2. Door Frame shall be in accordance with **ANSI/SDI A250.8**.



Apr 26, 2022

**NOISE BARRIER WALL  
ACCESS DOOR & FRAME  
STANDARD PLAN D-2.92-01**

SHEET 1 OF 2 SHEETS

APPROVED FOR PUBLICATION

*Mark Gaines*  
Mark Gaines (Apr 26, 2022 23:00 PDT)

Apr 26, 2022

STATE DESIGN ENGINEER

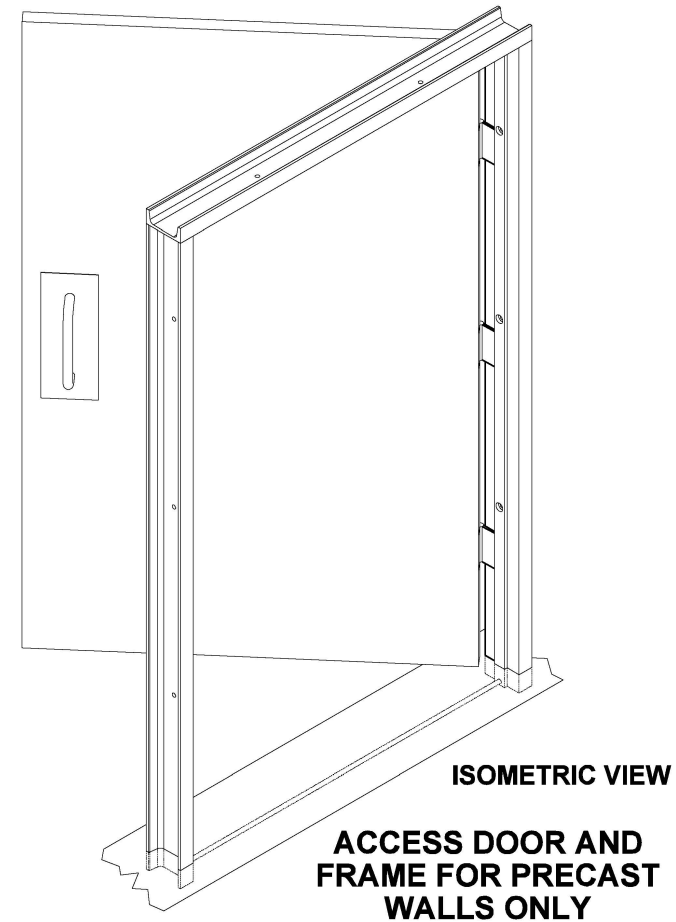
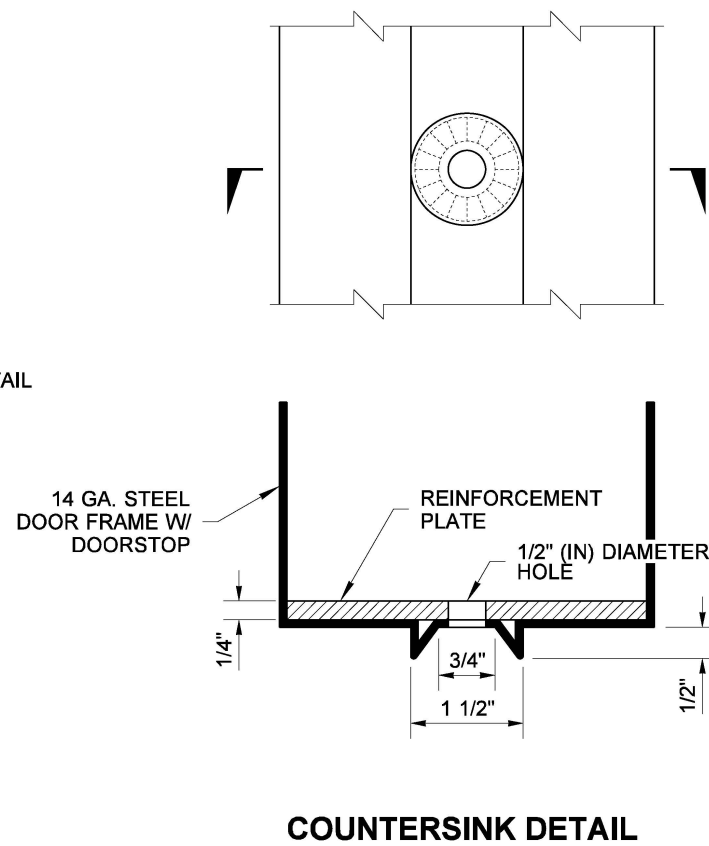
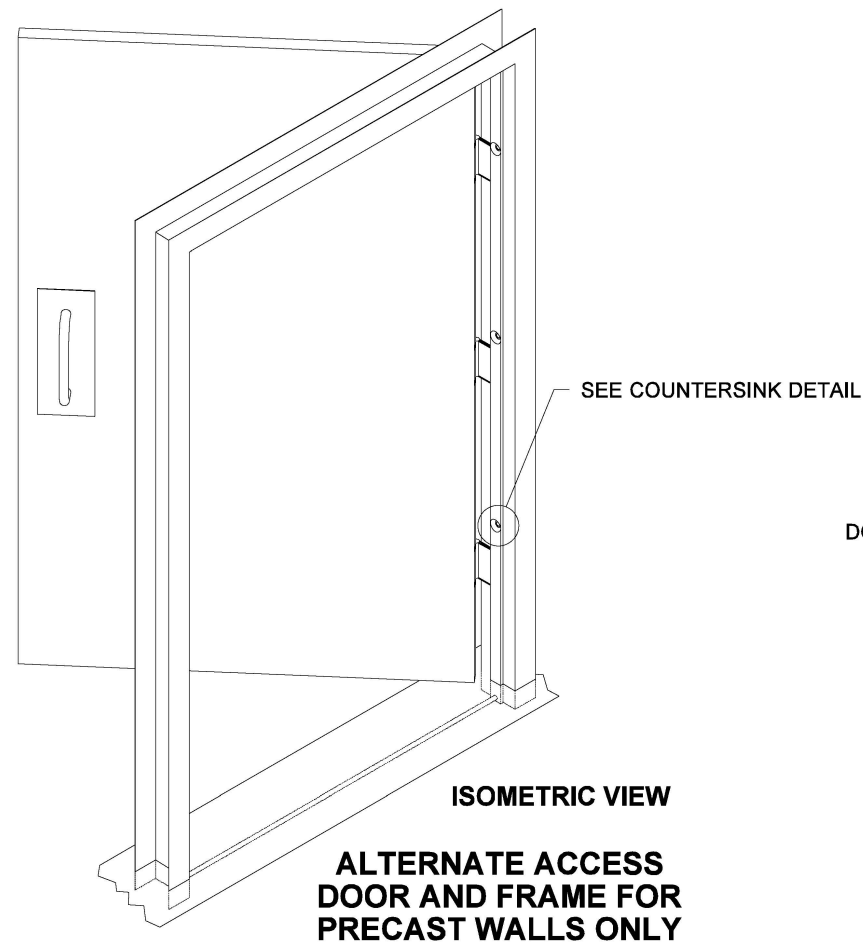
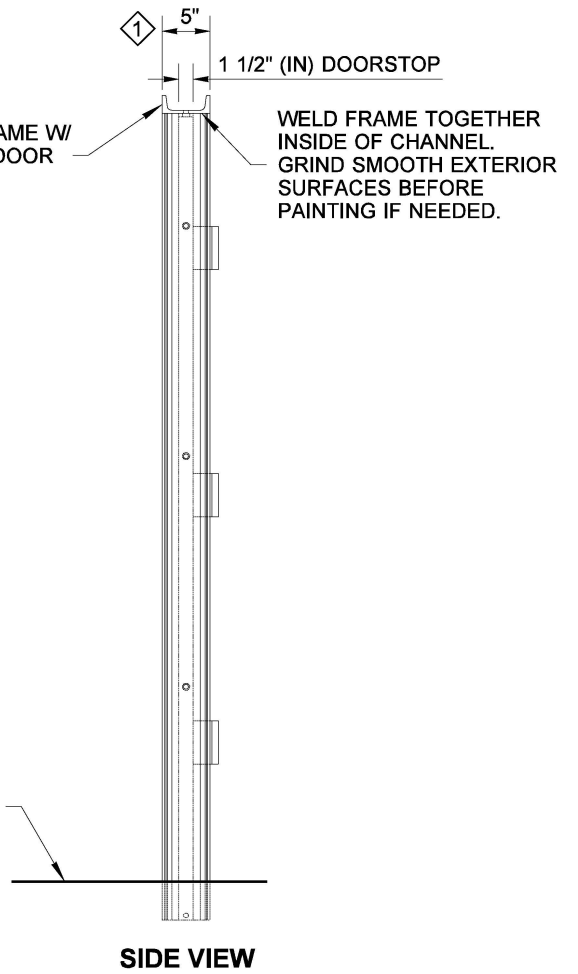
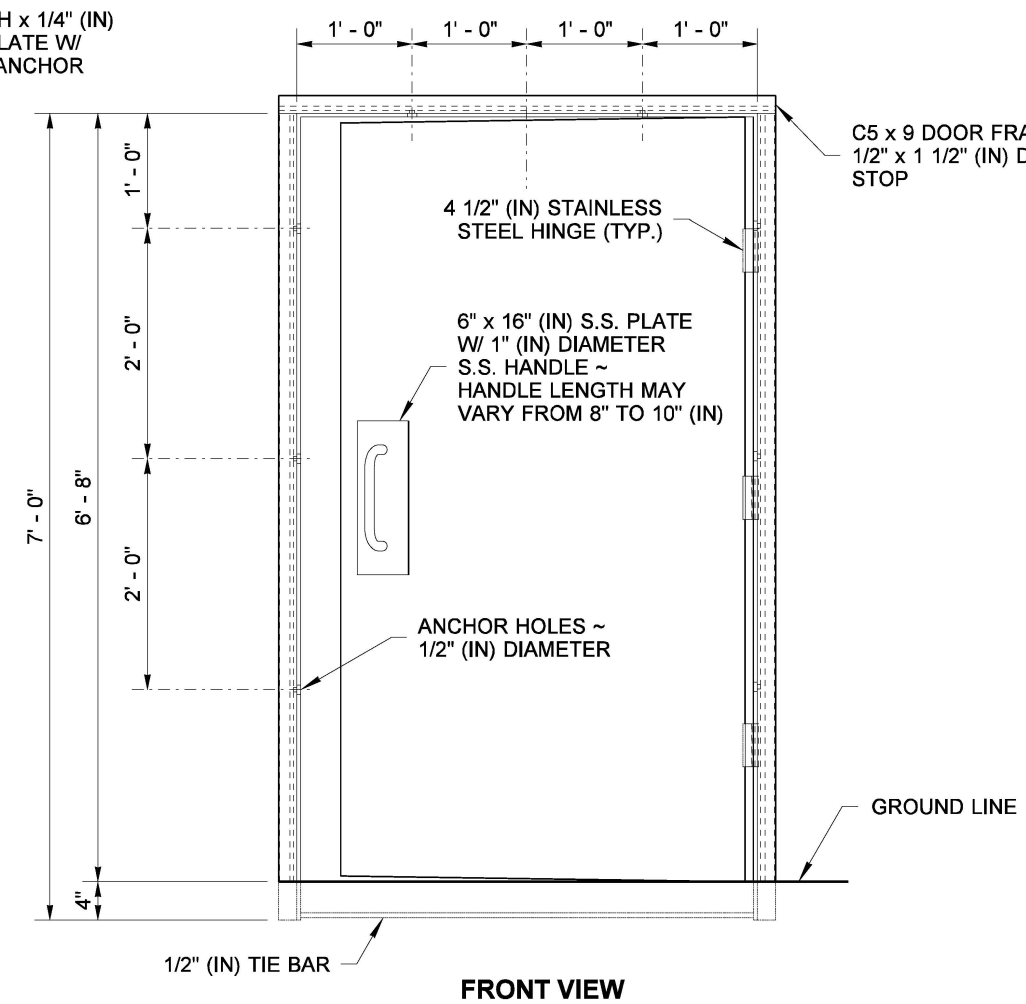
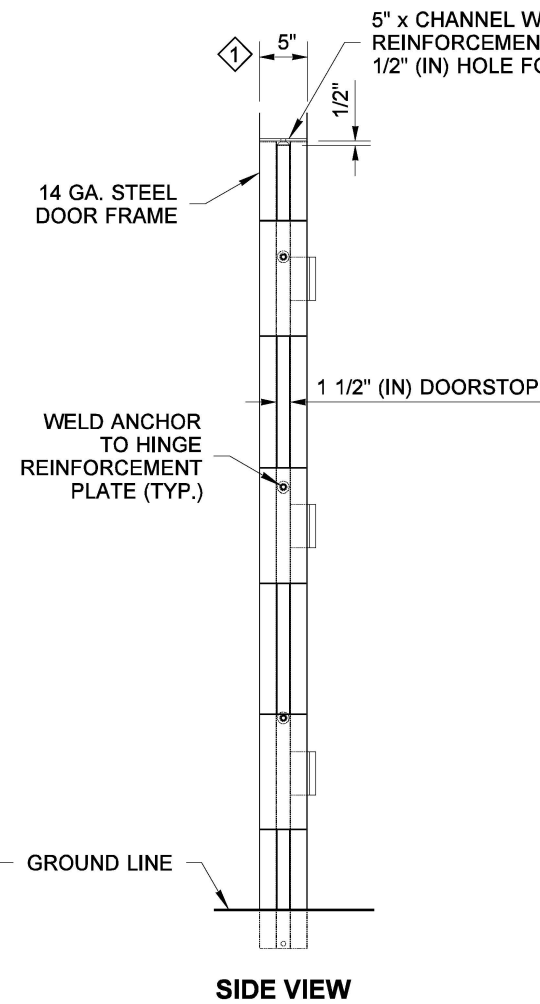
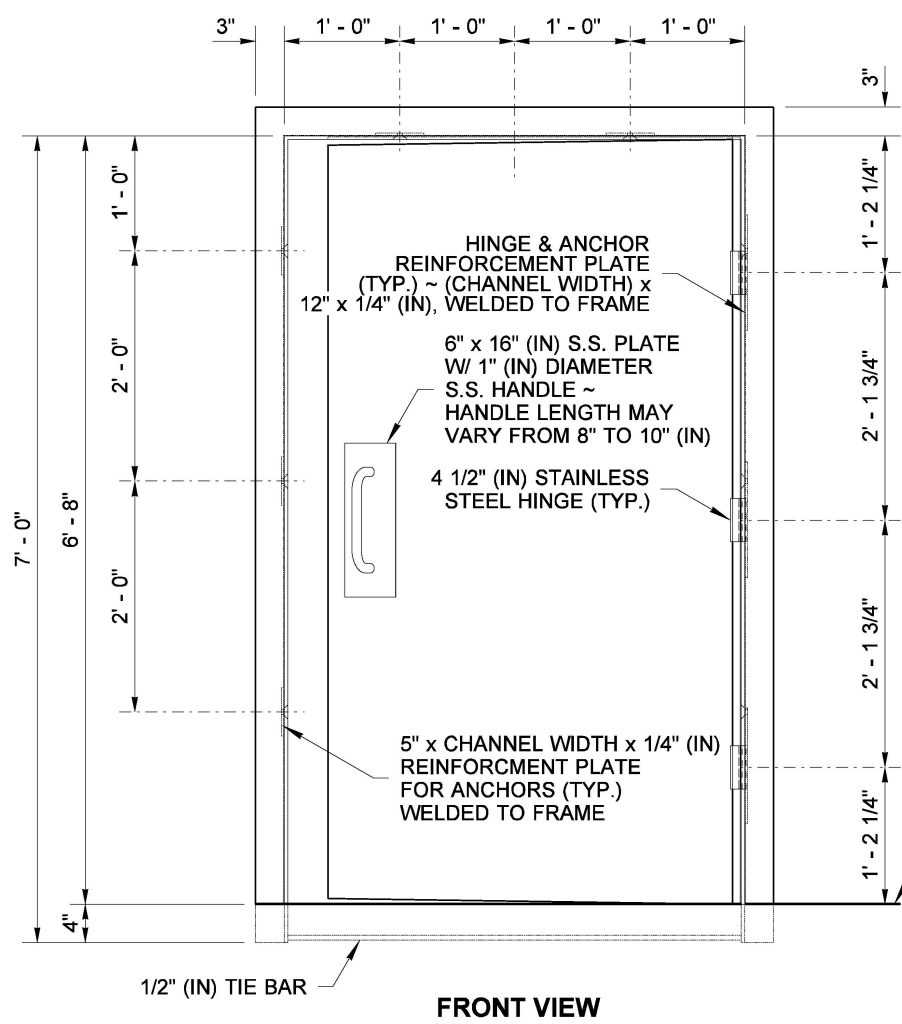


Washington State Department of Transportation

**ALTERNATE ACCESS  
DOOR AND FRAME FOR  
CAST-IN-PLACE AND  
PRECAST WALLS**

**ACCESS DOOR AND FRAME  
FOR CAST-IN-PLACE AND  
PRECAST WALLS**

DRAWN BY: ADAM COCHRAN



Apr 26, 2022

**NOISE BARRIER WALL  
ACCESS DOOR & FRAME  
STANDARD PLAN D-2.92-01**

SHEET 2 OF 2 SHEETS

APPROVED FOR PUBLICATION

Mark Gaines  
Mark Gaines (Apr 26, 2022 23:00 PDT)

Apr 26, 2022

STATE DESIGN ENGINEER

