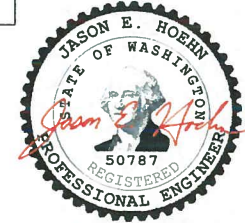


POLE DATA - LIGHT POLE - TYPE 1 - SLIP BASE								
MMC #	QTY	POLE TUBE				ANCHOR/CONNECTING BOLT DIA "H"	LUMINAIRE ARM	
		THICK (IN) "A"	BASE O.D. (IN) "B"	TOP O.D. (IN) "C"	LENGTH (FT) "D"		"E" SPAN	"F" MTG HT
WA-LP1-SP-6S/6T-30							6'-0"	30'-0"
WA-LP1-SP-8S/8T-30							8'-0"	
WA-LP1-SP-10S-30							10'-0"	
WA-LP1-SP-12S-30			8.72	5.5	23'-0"	1"	12'-0"	
WA-LP1-SP-14S-30							14'-0"	
WA-LP1-SP-16S-30							16'-0"	
WA-LP1-SP-6S/6T-35							6'-0"	35'-0"
WA-LP1-SP-8S/8T-35							8'-0"	
WA-LP1-SP-10S-35							10'-0"	
WA-LP1-SP-12S-35			9.42	5.5	28'-0"	1"	12'-0"	
WA-LP1-SP-14S-35							14'-0"	
WA-LP1-SP-16S-35							16'-0"	
WA-LP1-SP-6S/6T-40							6'-0"	40'-0"
WA-LP1-SP-8S/8T-40							8'-0"	
WA-LP1-SP-10S-40							10'-0"	
WA-LP1-SP-12S-40			10.12	5.5	33'-0"	1"	12'-0"	
WA-LP1-SP-14S-40							14'-0"	
WA-LP1-SP-16S-40							16'-0"	
WA-LP1-SP-6S/6T-50							6'-0"	50'-0"
WA-LP1-SP-8S/8T-50							8'-0"	
WA-LP1-SP-10S-50							10'-0"	
WA-LP1-SP-12S-50			11.52	5.5	43'-0"	1 1/8"	12'-0"	
WA-LP1-SP-14S-50							14'-0"	
WA-LP1-SP-16S-50							16'-0"	

\*\*\*INSTALL ONLY LUMINAIRE POLES WITH SINGLE MASTARM 16' 0" OR LESS AND DOUBLE MAST ARM 8' OR LESS ON SLIP BASE POLES\*\*\*

SLIP NOTE: THE TOP DAVIT ARM SECTION WILL SLIPFIT OVER BOTTOM POLES SECTION. OVER LAP MATING SURFACE SHALL BE SMOOTH AND FREE OF BURRS, DENTS AND LUMP OF ZINC.



9-24-20 (EXPIRES 12-18-21)

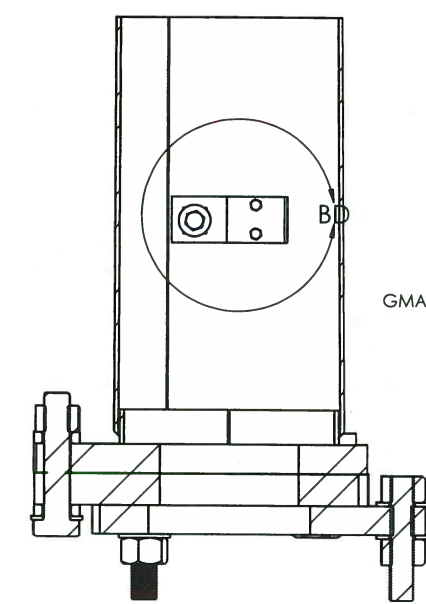
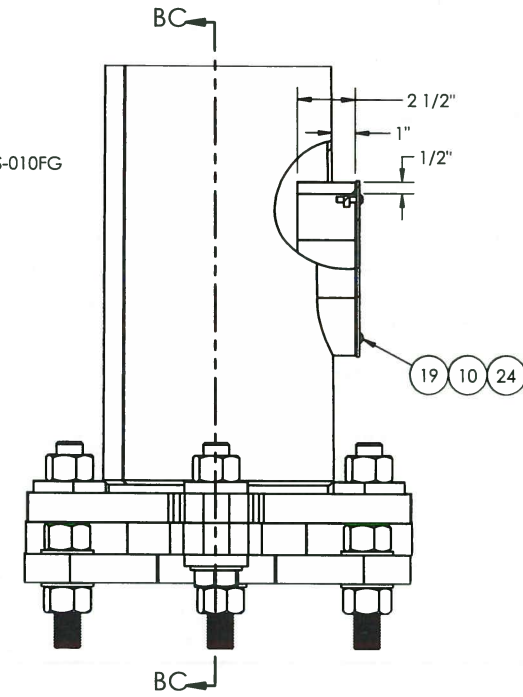
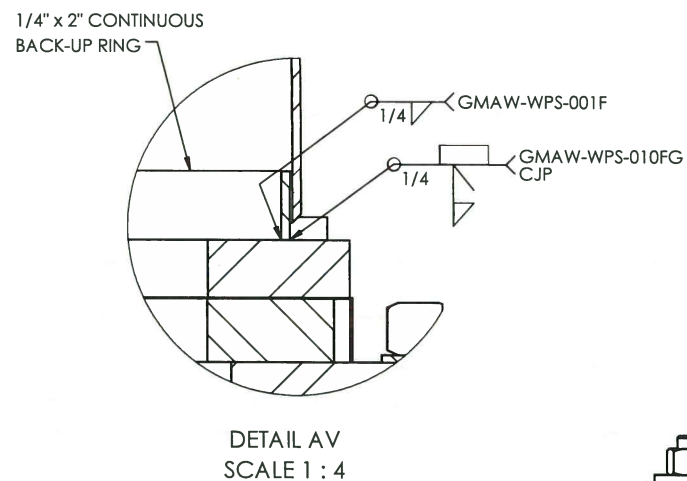
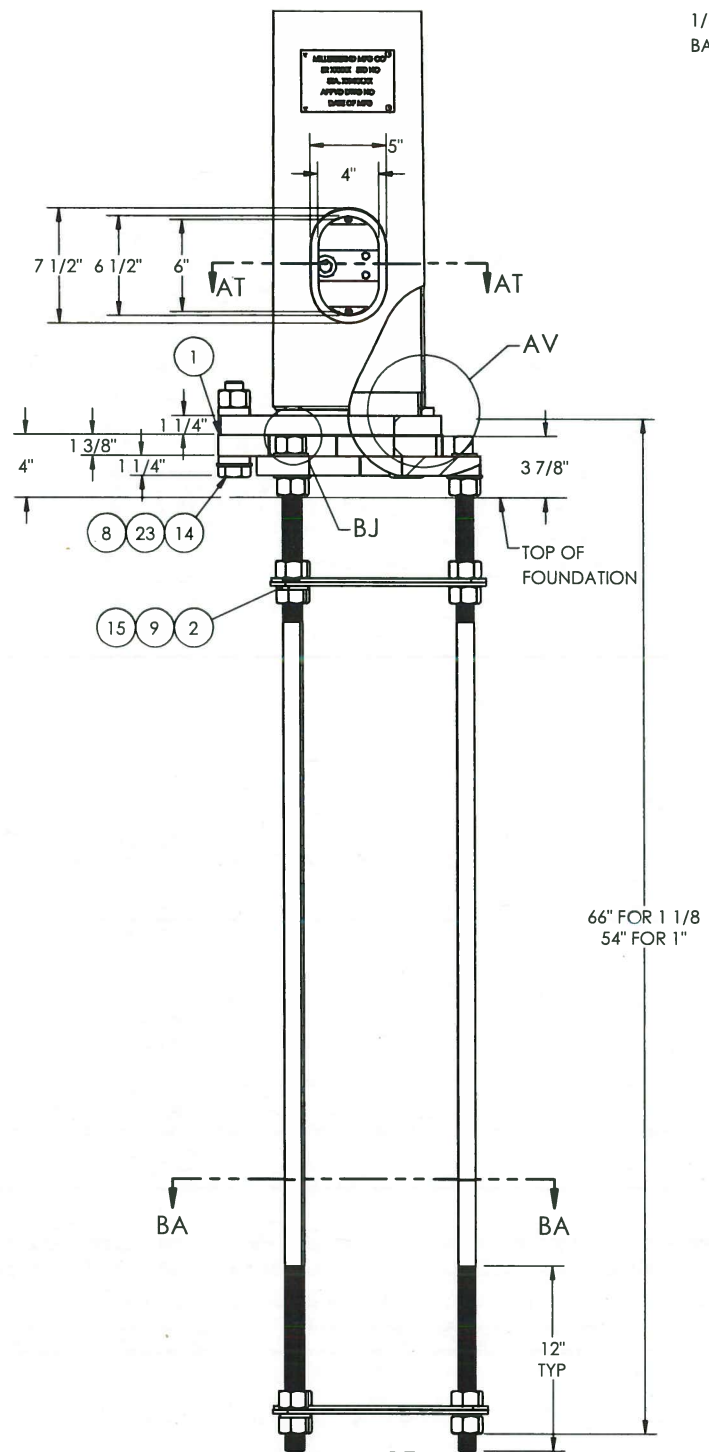
ITEM NO.	DESCRIPTION	QTY PER	ASSY	FINISH
1	KEEPER PLATE TRI ASTM A GR 33, G90 COATING	1		X
2	TEMPLATE 2X1/4X15	6		X
3	GROUND MTG PLATE	1		X
4	I.D. TAG - WA	1	X	
5	WLDMT POLE LIGHT "A" x "B" x "C" x "D"	1		X
6	ANCHOR PLATE	1		X
7	SLIP PLATE	1		X
8	WASHER PLATE	6		X
9	ANCHOR BOLT "H" X 60" W/4 NUTS 3 FLAT & 1 LOCK WASHER	3		
10	COVER HH M16C 4 1/4X6 3/4 2 BOLT	1		X
11	BOLT HX HD 1-2-13NC X 1" F593C SS	1	X	
12	BOLT HX HD 1/4-20NC X 1/2 F593C SS	2		
13	BOLT HX HD 5-8-11NC X 6-1-2 ASTM A307	1		
14	BOLT HVYHXHD "H" 5 1/2 F3125 A325GV TYPE 1 GV	3		
15	NUT HVY HX "H" A563 DH GV	3		
16	NUT HX 5-8-11NC ASTM A563 GR DH	1		
17	NUT SQ 1-2-13 SS	1		
18	RIVET POP 3/16X1/2X3/8 HD SS	4	X	
19	SCRW HX SK BT HD 1-4-20NC X 1 SS	2		
20	WLDMT ARM TWIN (SINGLE NOT SHOWN)	1		X
21	WASH F.56 IDX1.375ODX.091 THK BRASS COMM. BRASS	2	X	
22	WASHER FLAT 5/8 ASTM F436	2		
23	WASHER WIDE FLAT 1 1/8 X 2 1/4" OD GV	3		
24	GASKET HH M16	1	X	

MATERIAL SPECIFICATIONS			
POST: ASTM A572 GR55 BASE PLATE: ASTM A709 GR 50 MAST ARM: N/A MOUNTING PLATE: N/A HARDWARE FINISH: ASTM F2329 CONNECTION BOLTS: ASTM A449 OR F1554 GR 105 CONNECTION NUTS: CONNECTION WASHERS: ANCHOR BOLTS: ASTM F1554 GR105 ANCHOR BOLT NUTS: ASTM A563 GR DH ANCHOR BOLT WASHER: ASTM F436 PIPE: ASTM A53 GR B OR ASTM A500 GR B KEEPER PLATE (COATING G90) ASTM A653 GR 33			
DESIGN CRITERIA			
2015 AASHTO STANDARD SPECIFICATIONS FOR STRUCTURAL SUPPORTS ON HIGHWAY SIGNS, LUMINAIRES & TRAFFIC SIGNALS INCLUDING LATEST INTERIMS.			
WINDS: 115 MPH WITH A MEAN RECURRENCE INTERVAL OF 1700 YEARS VORTEX SHED: N/A FATIGUE CAT: N/A NATURAL WIND GUST: N/A LUMINAIRE: 3.3 SQ FT EPA LUMINAIRE WEIGHT: 50 LBS SIGN: 20 SQ FT @ 7' FROM BASE SIGN WEIGHT: 65 LBS			
WELD SPECIFICATION			
THE POST AND MAST ARM TO BE ROUND TAPERED TUBE FABRICATION WITH ONE SUBMERGED ARC LONGITUDINAL SEAM WELD WITH 100% PENETRATION 6" FROM BASE PLATE, FLANGE AND BUTT WELDED SHAFTS. EXCEPT FOR TUBES LESS THAN 5 IN DIAMETERS: FOR FEMALE SECTION OF SLIP JOINTED TUBES 10" AND GREATER: 1.5 X FEMALE SECTION INSIDE DIAMETER + 6 INCHES. FOR FEMALE SECTION OF SLIP JOINTED TUBES LESS THAN 10" FEMALE SECTION NOMINAL DIAMETER AND 60% FOR REMAINDER. GAS METAL ARC WELDING PROCESS WITH 60% PENETRATION MAY BE USED FOR REMAINDER OF WELDED FABRICATION.			
WELD TESTING: 100% OF ALL WELDS VISUAL TESTED (VT), 100% OF ALL COMPLETE JOINT PENETRATION (CJP) WELDS ULTRASONIC TESTED (UT) BASED ON THE THINNEST MATING MATERIAL: (PER AASHTO 2013 5.15.5-WELD INSP) THICKNESS. < 6MM (0.25 IN) MT > 6MM (0.25 IN) UT A RANDOM 30% OF ALL FILLET WELDS AND PARTIAL JOINT PENETRATION (PJP) LONGITUDINAL SEAM WELDS MAGNETIC PARTICLE TESTED (MT).			
WELDING INSPECTION OF STRUCTURE SHALL BE IN ACCORDANCE WITH THE REQUIREMENTS OF WASHINGTON STATE DEPARTMENT OF TRANSPORTATIONS STANDARD SPECIFICATION SECTION 6-03.3(25) AND 2015 AASHTO WELD INSPECTION SECTION 14.4.4.8			
STRUCTURE FINISH SPECIFICATION			
GALV. OR PRIME COAT: HOT DIPPED GALV. PER ASTM A123 FINISH COAT: - COLOR: - FEDERAL OR RAL SPEC.: - WEIGHT W/GALV.: - WEIGHT W/GALV.&PAINT: - SURFACE AREA: GAL. OF PAINT:			
		622 6TH ST. SO. WINSTED, MN 55395	
THIS DOCUMENT CONTAINS CONFIDENTIAL INFORMATION AND IS THE PROPERTY OF MILLERBERND MFG AND MAY NOT BE COPIED, REPRODUCED OR DISCLOSED IN ANY MATTER WITHOUT THE EXPRESS WRITTEN CONSENT FROM MILLERBERND MFG			
SALES ORDER NO.:	QTY:	STATE:	SHEET
74515	-	WA	1 OF 3
DESCRIPTION: SUB POLE LIGHT RD TYPE 1 - SLIP BASE			
EST. WEIGHT:		DRAWING NO:	
		74515-WA-LP1-SB	
PROJECT NAME: STATE OF WASHINGTON LIGHT POLES			
PROJECT LOCATION: WA			
DWN BY: REBEKAH		DATE: 2/20/17	
CHK BY:		DATE:	

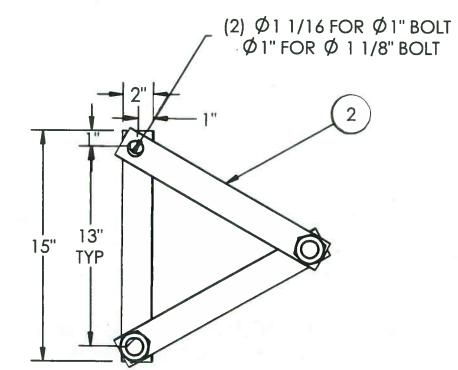
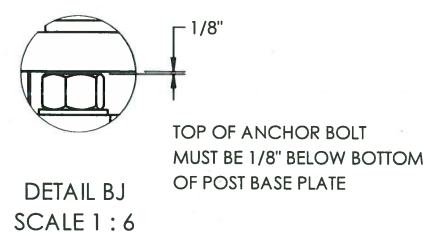
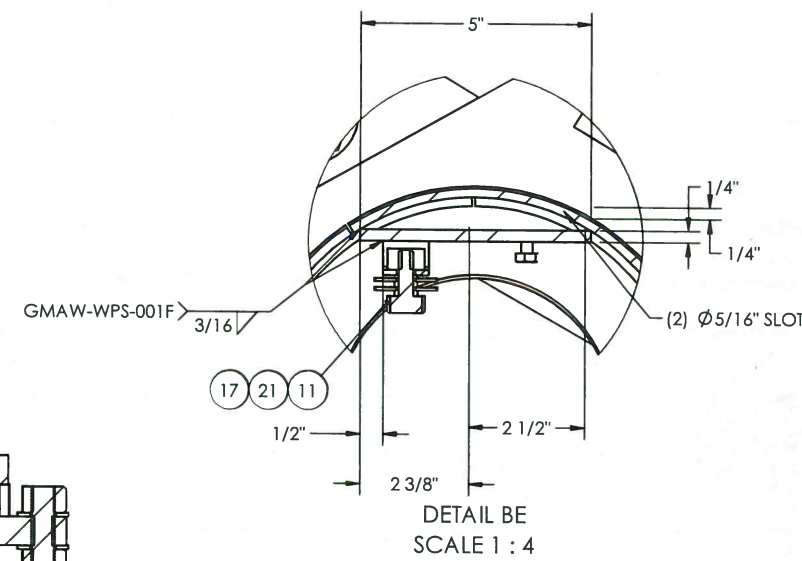
**APPROVED**  
 Manufacturer's Pole Plan  
 Approved For Listing As A  
 Pre-Approved Drawing  
 WSDOT Bridge & Structures Office  
 By GB Date 10-21-2020

REVISIONS			
REV.	DESCRIPTION	DATE	DRFT
H	UPDATED POLE SHAFT SIZES TO MATCH CALCS (30', 35' & 40' DESIGNS)	9/23/2020	RK
G	UPDATED WELD NOTE. UPDATED PER COMMENTS	6/12/2020	RK
F	UPDATED NOTES PER COMMENTS; UPDATED WPS TO MMC STANDARDS	5/12/2020	RK

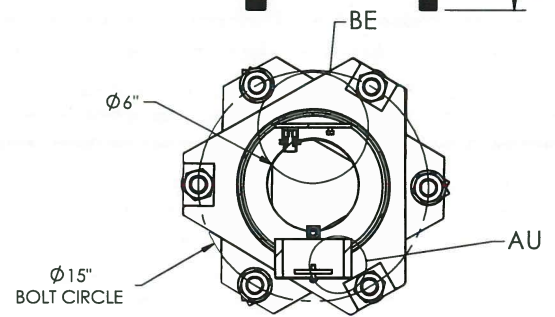
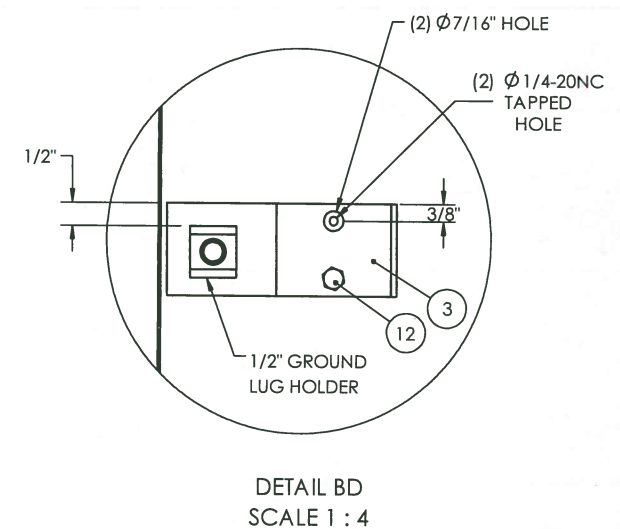
ALUMINUM ID TAG  
 TEXT TO BE STAMPED AS SHOWN IN 5/16" HIGH LETTERS  
 SECURED TO POST WITH (4) 3/16" DIA RIVETS  
 NOTE: FOR NOTE AT WELD SYMBOL TAIL, SEE WELDING PROCEDURE SPECIFICATION



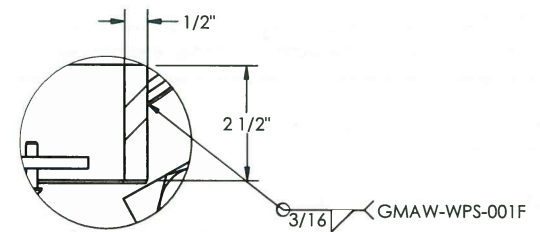
SECTION BC-BC SCALE 1 : 8



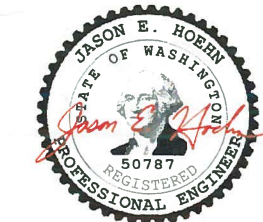
SECTION BA-BA SCALE 1 : 12



SECTION AT-AT SCALE 1 : 12



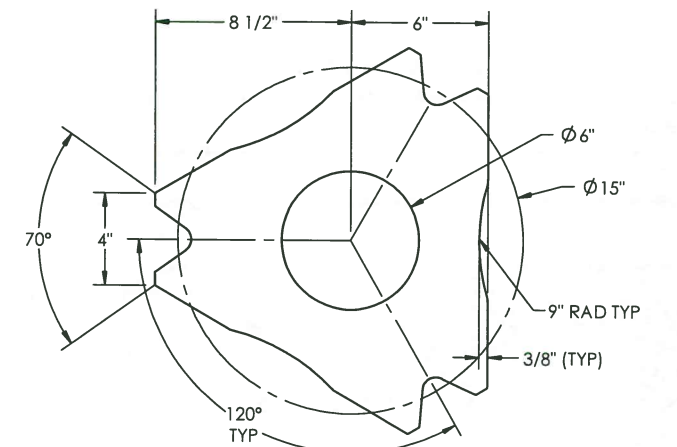
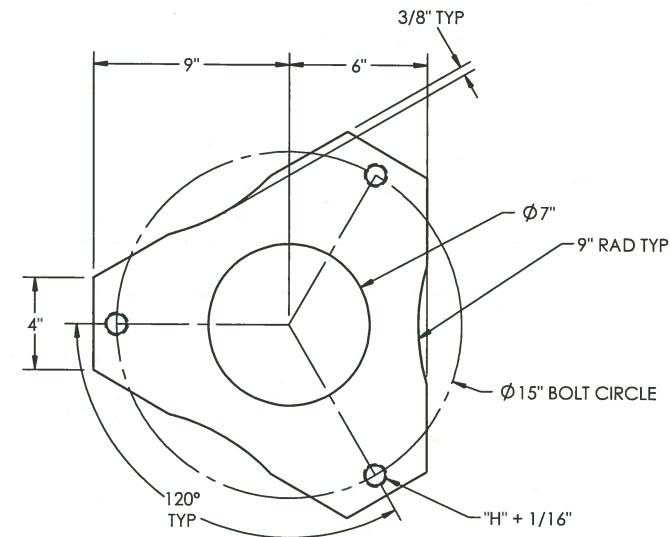
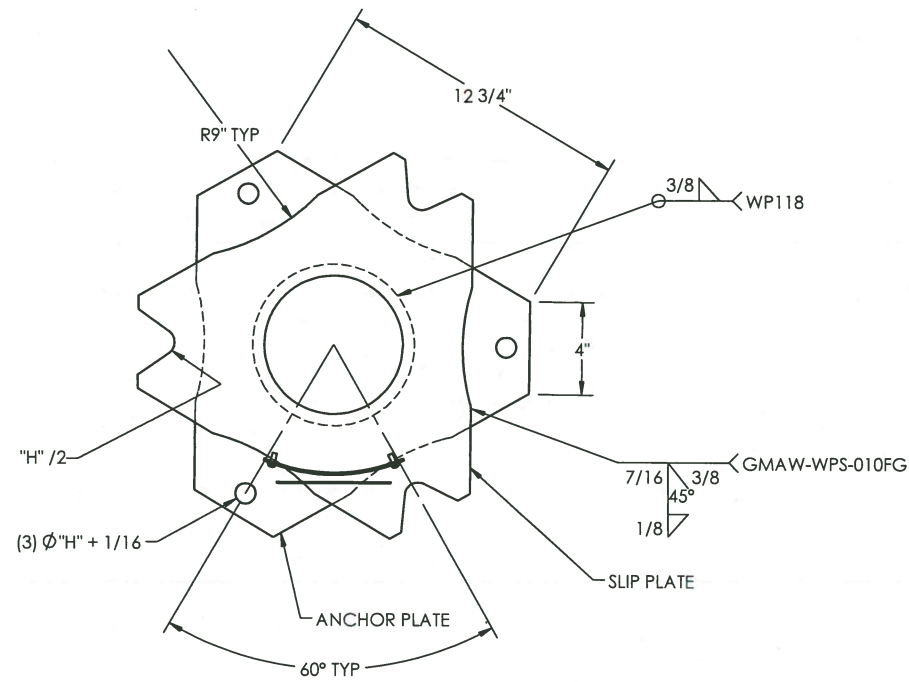
**APPROVED**  
 Manufacturer's Pole Plan  
 Approved For Listing As A  
 Pre-Approved Drawing  
 WSDOT Bridge & Structures Office  
 By GB Date 10-25-2020



9-24-20 (EXPIRES 12-18-21)

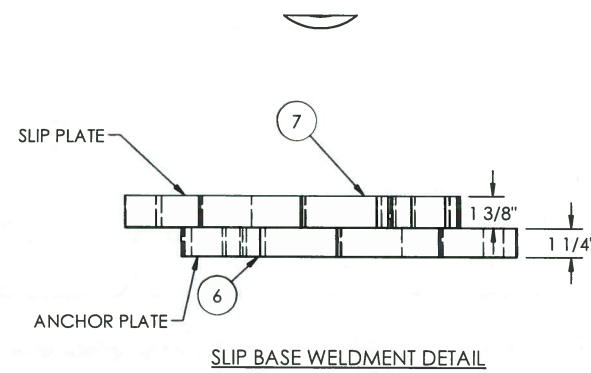
<b>MILLERBERND</b>		622 6TH ST. SO. WINSTED, MN 55395	
THIS DOCUMENT CONTAINS CONFIDENTIAL INFORMATION AND IS THE PROPERTY OF MILLERBERND MFG AND MAY NOT BE COPIED, REPRODUCED OR DISCLOSED IN ANY MANNER WITHOUT THE EXPRESS WRITTEN CONSENT FROM MILLERBERND MFG			
SALES ORDER NO.:	QTY:	STATE:	SHEET
74515	-	WA	2 OF 3
DESCRIPTION: SUB POLE LIGHT RD TYPE 1 - SLIP BASE			
EST. WEIGHT:		DRAWING NO.:	
		74515-WA-LP1-SB	
PROJECT NAME: STATE OF WASHINGTON LIGHT POLES			
PROJECT LOCATION: WA			
DWN BY: REBEKAH		DATE: 2/20/17	
CHK BY:		DATE:	





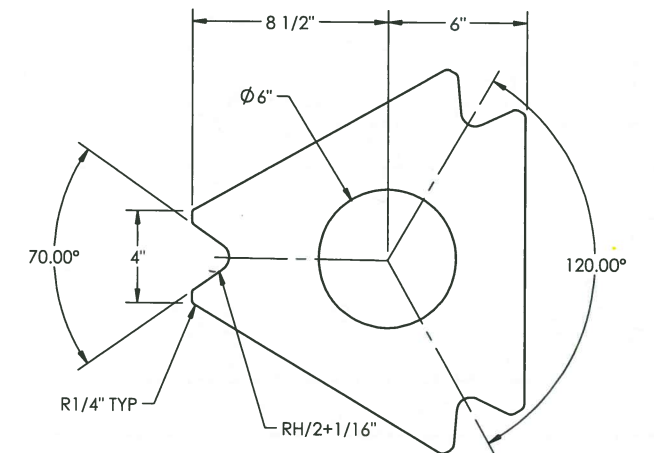
**ANCHOR PLATE DETAIL**

**SLIP PLATE DETAIL**

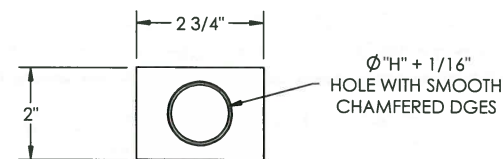


**SLIP BASE WELDMENT DETAIL**

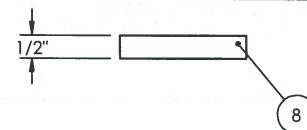
**APPROVED**  
 Manufacturer's Pole Plan  
 Approved For Listing As A  
 Pre-Approved Drawing  
 WSDOT Bridge & Structures Office  
 By GB Date 10-21-2020



**POLE BASE PLATE DETAIL**

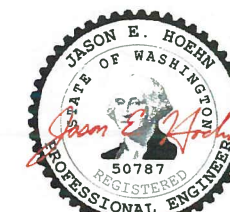
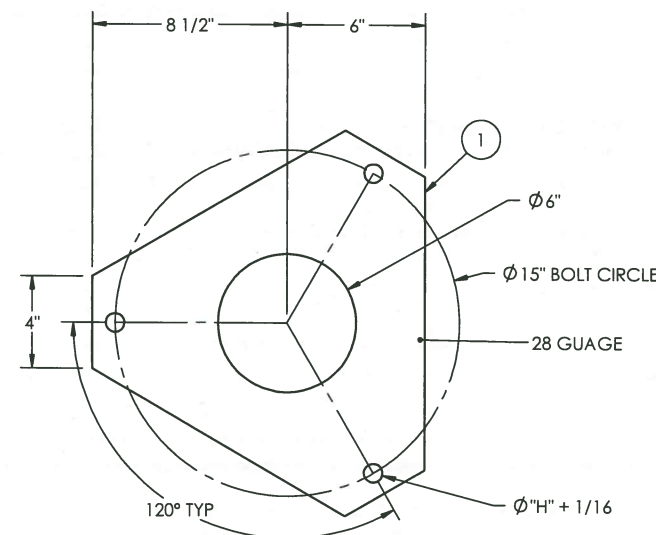


**PLATE WASHER DETAIL**



**KEEPER PLATE DETAIL**

PLACE BETWEEN POLE BASE  
 PLATE AND BOTTOM SLIP BASE  
 ON TOP OF MIDDLE WASHERS  
 ASTM A653 GR 33, G90 COATING



9-24-20 (EXPIRES 12-18-21)

<b>MILLERBERND</b>		622 6TH ST. SO. WINSTED, MN 55395	
THIS DOCUMENT CONTAINS CONFIDENTIAL INFORMATION AND IS THE PROPERTY OF MILLERBERND MFG AND MAY NOT BE COPIED, REPRODUCED OR DISCLOSED IN ANY MANNER WITHOUT THE EXPRESS WRITTEN CONSENT FROM MILLERBERND MFG			
SALES ORDER NO.:	QTY:	STATE:	SHEET
74515	-	WA	3 OF 3
DESCRIPTION: SUB POLE LIGHT RD TYPE 1 - SLIP BASE			
EST. WEIGHT:		DRAWING NO:	
		74515-WA-LP1-SB	
PROJECT NAME: STATE OF WASHINGTON LIGHT POLES			
PROJECT LOCATION: WA			
DWN BY: REBEKAH		DATE: 2/20/17	
CHK BY:		DATE:	