

CONTRACT NO: 009015 FEDERAL AID NO:
CONTRACT TITLE: SR 520, MONTLAKE TO LAKE WASHINGTON I/C AND BRIDGE
CHANGE ORDER NO: 144 MULTI ISSUE RES NO.4-CITY-2022

PRIME CONTRACTOR: [REDACTED] GRAHAM CONTRACTING, LTD.
13555 SE 36TH ST SUITE 120
BELLEVUE WA 98006-1442

(X) Ordered by Engineer under the terms of Section 1-04.4 of the Standard Specifications
(X) Change proposed by Contractor

ENDORSED BY: <i>Signature on file</i>	SURETY CONSENT:
CONTRACTOR SIGNATURE Jan 24, 2023	ATTORNEY IN FACT
DATE	DATE

ORIGINAL CONTRACT AMOUNT:	455,349,888.00
CURRENT CONTRACT AMOUNT:	484,319,043.23
ESTIMATED NET CHANGE THIS ORDER:	533,962.00
ESTIMATED CONTRACT TOTAL AFTER CHANGE:	484,853,005.23

Signature Required: Project Engineer State Construction Engineer
 Regional Administrator Other Agency

<i>Signature on file</i>	<i>Signature on file</i>
PROJECT ENGINEER SIGNATURE Jan 24, 2023	STATE CONSTRUCTION ENGINEER SIGNATURE Jan 31, 2023
DATE	DATE
<i>Signature on file</i>	OTHER APPROVAL WHEN REQUIRED
REGIONAL ADMINISTRATOR SIGNATURE Jan 31, 2023	SIGNATURE _____ DATE _____
DATE	REPRESENTING _____

CONTRACT NO:009015

CHANGE ORDER NO:144

All work, materials, and measurements to be in accordance with the provisions of the Standard Specifications and Special Provisions for the type of construction involved.

This contract is revised as follows:

The first paragraph above is revised to read:

All work, materials, and measurements to be in accordance with the Contract Documents for this Project. Unless specifically modified herein, all provisions in the Contract Documents shall remain in full force and effect.

DESCRIPTION:

This change order incorporates both Design-Builder Initiated Changes (DBIC) and Owner Initiated Changes (OIC) into the Contract, in accordance with General Provisions Section 1-04.4, and resolves issues associated with the following potential change orders (PCOs):

1. PCO 237 "Pad 5 Service Cabinet Protest" (DBIC)
2. PCO 245 "SCL 26 kV Pole Relocation in Hamlin Alley" (DBIC)
3. PCO 252 "Temporary Illumination Connection" (DBIC)
4. PCO 270 "SCL 26 kV at 24th Avenue" - (DBIC)
5. PCO 271 "Telemetry Pad Meter Pedestal" - (OIC)
6. PCO 282 "City Improvements on S. End of E Montlake Pl E" - (OIC)
7. PCO 295 "6-Inch Concrete on OCR Trail" (OIC)

CONTRACT REQUIREMENTS:

1. PCO 237 Pad 5 Service Cabinet Protest

This change order compensates the Design-Builder for all costs associated with installing the remote single meter socket outside the Service Cabinet Switchgear located at Pad 5, in accordance with Seattle City Light (SCL) Standards.

2. PCO 245 SCL 26 kV Pole Relocation in Hamlin Alley

This change order compensates the Design-Builder for all costs associated with installing a subsurface eco-block guy wire attachment system to support SCL's temporary power pole near the Seattle Public Utilities (SPU) vaults at the south end of Hamlin Alley.

3. PCO 252 Temporary Illumination Connection

This change order compensates the Design-Builder for all costs associated with connecting the temporary Phase 2C illumination system on Montlake Blvd to the existing temporary signal cabinet meter at the WDX ramp.

4. PCO 270 SCL 26 kV at 24th Avenue

This change order compensates the Design-Builder for all costs associated with installation of temporary and permanent 26 kV conduits across Lake Washington Blvd to meet the requirements of Field Design Change (FDC) 127. These costs represent the difference between Work identified in FDC 41 and the Work identified in FDC 127.

5. PCO 271 Telemetry Pad Meter Pedestal

This change order compensates the Design-Builder for all Work necessary to install the service meter and panel pedestal at the telemetry pad adjacent to the SPU Pressure Regulating Station.

6. PCO 282 City Improvements on S. End of E Montlake Pl E

This change order compensates the Design-Builder for the additional Work along Montlake Blvd, south of E Roanoke Street. The scope of Work is shown on page 5 of this change order. Work also includes design and preparation of working drawings, to ensure consistency between the City's concept plan and the Design-Builder's design. The final design for the added Work shall be incorporated into the as-built drawings in lieu of a formal design plan update.

CONTRACT NO:009015

CHANGE ORDER NO:144

7. PCO 295 6-Inch Concrete at OCR Trail

This change order compensates the Design-Builder for increasing the thickness of the portland cement concrete pavement (PCCP) to 6 inches along a section of concrete path in the Old Canal Reserve (OCR) area. With this change, the total pavement depth along this trail section will be 6 inches PCCP over 6 inches Mineral Aggregate Type 2. Refer to page 6 of this change order for limits. This change shall be incorporated into the as-built drawings in lieu of a formal design plan update.

PAYMENT:

The new lump sum pay item: "Multiple Issue Res No. 04City - 2022" in the amount of \$533,962.00 shall be full and final payment for all additional costs for equipment, labor, tools, materials, engineering, indirect, overhead, and other costs realized by the Design-Builder and its subcontractors, consultants, and suppliers, and shall fully resolve all PCOs described in this change order.

CONTRACT TIME:

There shall be no adjustment in Contract Time as a result of this change order.

RELEASE:

The Design-Builder, Graham Contracting Ltd (GCL), agrees by the signing of this change order that all Notices of Protest associated with the PCOs included herein are fully resolved and releases the State of Washington from any claims, disputes, or further protests associated with said PCOs.

GCL further agrees that upon payment of this change order in the amount of \$533,962.00, any and all requests for compensation for direct and indirect costs set forth in the following PCO issues and associated documents have been satisfied in full and the State of Washington is discharged and released from any additional requests for extra compensation:

*PCO 237 "Pad 5 Service Cabinet Protest" - DBIC
GCL Serial Letter Nos. W17068-127 dated May 3, 2021; W17068-130 dated June 1, 2021; W17068-132 dated June 24, 2021; W17068-136 dated July 28, 2021; W17068-209 dated June 21, 2022; W17068-211 dated July 21, 2022; W17068-218 dated August 22, 2022; W17068-221 dated September 19, 2022; W17068-227 dated October 19, 2022; and other documents specifically related to this PCO.

*PCO 245 "SCL 26 kV Pole Relocation at Hamlin Alley" - DBIC
GCL Serial Letter Nos. W17068-134 dated July 9, 2021; W17068-137 dated August 9, 2021; W17068-144 dated September 7, 2021; W17068-151 dated October 7, 2021; W17068-160 dated November 3, 2021; W17068-166 dated December 2, 2021; W17068-173 dated December 22, 2021; W17068-179 dated February 2, 2022; W17068-187 dated March 5, 2022; W17068-192 dated April 4, 2022; W17068-199 dated May 3, 2022; W17068-205 dated June 2, 2022; W17068-209 dated June 21, 2022; W17068-211 dated July 21, 2022; W17068-218 dated August 22, 2022; W17068-221 dated September 19, 2022; W17068-227 dated October 19, 2022; and other documents specifically related to this PCO.

*PCO 270 "SCL 26 kV at 24th Avenue" DBIC
GCL Serial Letter Nos. W17068-162 dated November 18, 2021; W17068-171 dated December 17, 2021; W17068-177 dated January 14, 2022; W17068-184 dated February 11, 2022; W17068-190 dated March 18, 2022; W17068-196 dated April 18, 2022; W17068-203 dated May 17, 2022; W17068-209 dated June 21, 2022; W17068-211 dated July 21, 2022; W17068-218 dated August 22, 2022; W17068-221 dated September 19, 2022; W17068-227 dated October 19, 2022; and other documents specifically related to this PCO.

WASHINGTON STATE
DEPARTMENT OF TRANSPORTATION
CHANGE ORDER

DATE:12/13/22
PAGE 4 of 6

CONTRACT NO:009015

CHANGE ORDER NO:144

ITEM NO	GROUP NO	STD ITEM	UNIT OF MEASURE	UNIT PRICE	EST QTY CHANGE	EST AMT CHANGE
1098	01		L.S.	0.00	0.00	225,303.00
1098	05		L.S.	0.00	0.00	29,453.00
1098	06		L.S.	0.00	0.00	129,206.00
1098	N1		L.S.	0.00	0.00	10,000.00
1098	N2		L.S.	0.00	0.00	140,000.00

AMOUNT TOTAL

533,962.00
=====

GENERAL NOTE:

KCM (KING COUNTY METRO) TRANSIT TO INSTALL SHELTER COMPONENTS, BENCHES AND WASTE RECEPTACLES.

PAVING LEGEND

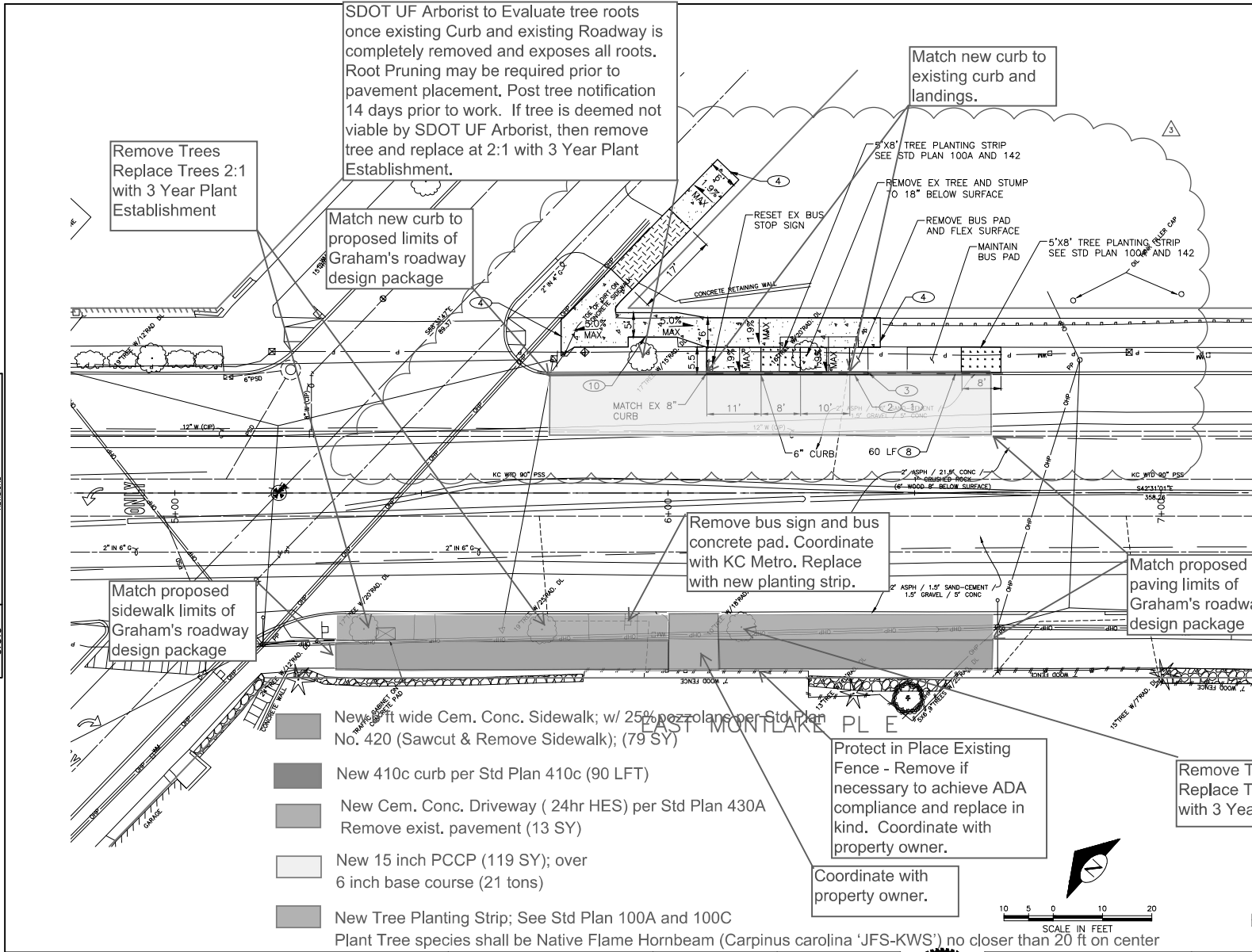
- SIDEWALK, CEM CONC WITH 25% POZZOLANS PER STD PLAN NO 420, UNLESS OTHERWISE NOTED (SAWCUT & REMOVE EX SIDEWALK OR CLEARING & GRUBBING)
- SEEDED LAWN INSTALLATION OVER AMENDED SOIL PER STD PLAN 142 (CLEARING & GRUBBING)
- 3" FLEXIBLE POROUS SURFACE TREATMENT PER STD SPEC 8-02.3(9)B
- CEM CONC DRIVEWAY (24 HR HES) PER STD PLAN 430A (REM EX PAVING AND CONC CURB)
- GRADE BREAK

CONSTRUCTION NOTES

- 1 CEM CONC CURB PER STD PLAN 410C
- 2 REMOVE CURB
- 3 MATCH EXISTING CURB HEIGHT
- 4 MATCH EXISTING ELEVATION
- 5 ADJUST HANDHOLE
- 6 ADJUST EXISTING UTILITY
- 7 NOT USED
- 8 C-P/BUS CURB MARKING PER COS STD PLAN 713
- 9 CURB RAMP TYPE 422A, WITH SIDE CURBS (SEE SHEET CR2)
- 10 TREE ROOT PRUNING (SEE SECTION 8-02.3(23))
- 11 SEE SW DRAWINGS FOR SIDEWALK IMPROVEMENTS

SIGNING LEGEND

- SEE SHEET CHD11 FOR SIGNING SCHEDULE
- EXISTING SIGN
 - PROPOSED SIGN
 - RELOCATE SIGN FROM
 - RELOCATE SIGN TO



Remove Trees
Replace Trees 2:1
with 3 Year Plant
Establishment

SDOT UF Arborist to Evaluate tree roots
once existing Curb and existing Roadway is
completely removed and exposes all roots.
Root Pruning may be required prior to
pavement placement. Post tree notification
14 days prior to work. If tree is deemed not
viable by SDOT UF Arborist, then remove
tree and replace at 2:1 with 3 Year Plant
Establishment.

Match new curb to
proposed limits of
Graham's roadway
design package

Match new curb to
existing curb and
landings.

Remove bus sign and bus
concrete pad. Coordinate
with KC Metro. Replace
with new planting strip.

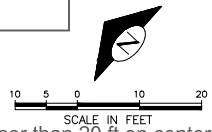
Match proposed
paving limits of
Graham's roadway
design package

Match proposed
sidewalk limits of
Graham's roadway
design package

Protect in Place Existing
Fence - Remove if
necessary to achieve ADA
compliance and replace in
kind. Coordinate with
property owner.

Coordinate with
property owner.

- New 8 ft wide Cem. Conc. Sidewalk; w/ 25% pozzolans per Std Plan No. 420 (Sawcut & Remove Sidewalk); (79 SY)
- New 410c curb per Std Plan 410c (90 LFT)
- New Cem. Conc. Driveway (24hr HES) per Std Plan 430A
Remove exist. pavement (13 SY)
- New 15 inch PCCP (119 SY); over
6 inch base course (21 tons)
- New Tree Planting Strip; See Std Plan 100A and 100C
Plant Tree species shall be Native Flame Hornbeam (Carpinus carolina 'JFS-KWS') no closer than 20 ft on center



E MONTLAKE PL & E ROANOKE ST
BUS STOP IMPROVEMENTS

23RD AVENUE E
VISION ZERO

PW#: 2019-078

MARK	DATE	INITIAL	REVISION
3	5/22/2022	LD	DESIGN CHANGE 03

APPROVED FOR ADVERTISING
LIZ ALZEER
DEPARTMENT OF FINANCE & ADMINISTRATIVE SERVICES
SEATTLE, WASHINGTON

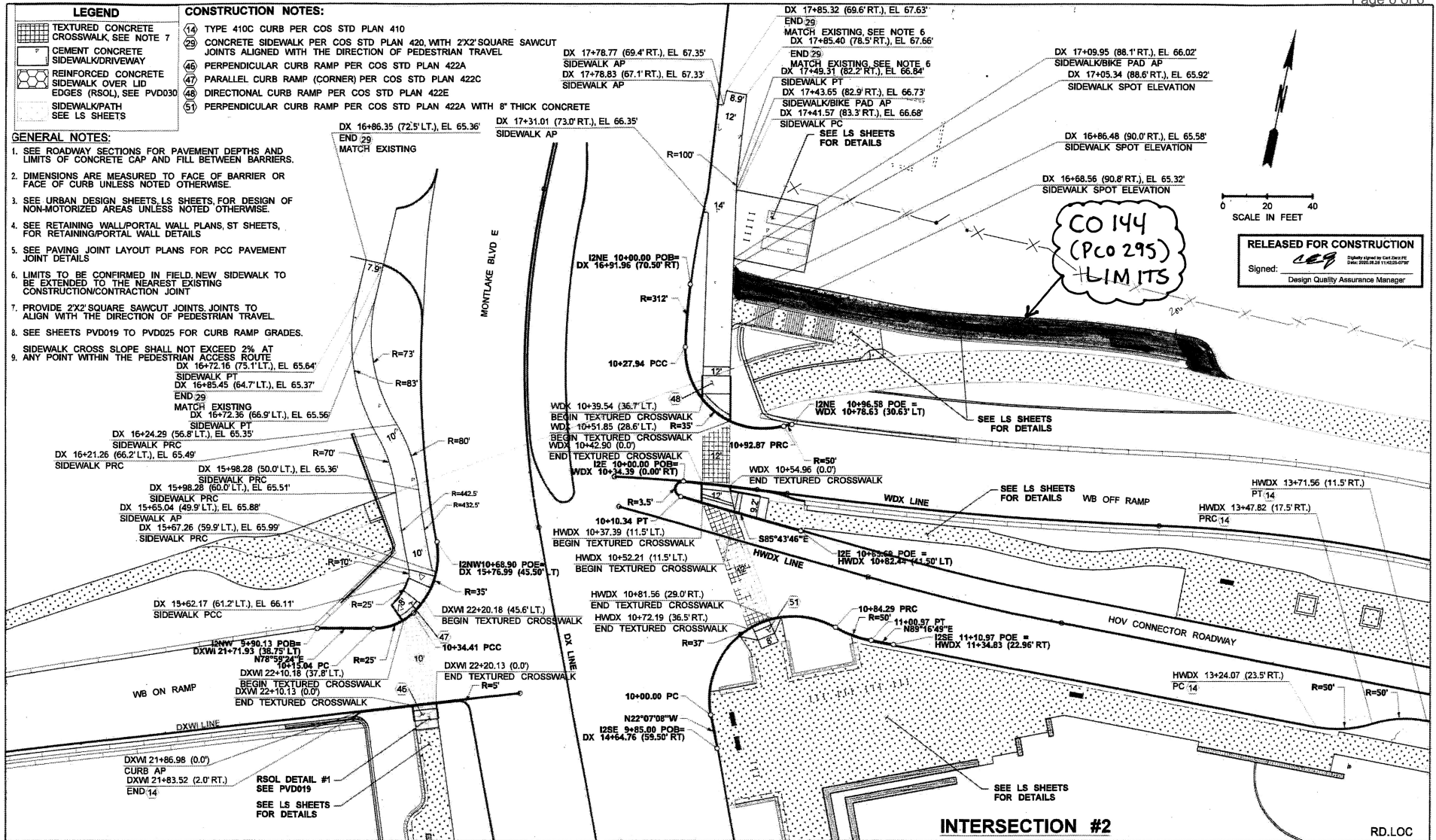
INITIALS AND DATE		INITIALS AND DATE	
DESIGNED	CHECKED	REVIEWED:	DES.
DRAWN	CHECKED	SDOT	CONST.
		RECEIVED:	PRDCL MGR.
			REVISED AS BUILT



Seattle Department of Transportation
ORDINANCE NO. 126289
PW NO. 2019-078

PC	TRC0004
CD	
VPI #	790-948
	BS1
SHEET	20 OF 49

SCALE: 1"=10'
 DATE: 5/22/2022
 DRAWN: LD
 CHECKED: LD
 DESIGNED: LD
 REVISION: 03



LEGEND

	TEXTURED CONCRETE CROSSWALK SEE NOTE 7
	CEMENT CONCRETE SIDEWALK/DRIVEWAY
	REINFORCED CONCRETE SIDEWALK OVER LID EDGES (RSOL), SEE PVD030
	SIDEWALK/PATH SEE LS SHEETS

CONSTRUCTION NOTES:

14	TYPE 410C CURB PER COS STD PLAN 410
20	CONCRETE SIDEWALK PER COS STD PLAN 420 WITH 2X2" SQUARE SAWCUT JOINTS ALIGNED WITH THE DIRECTION OF PEDESTRIAN TRAVEL
46	PERPENDICULAR CURB RAMP PER COS STD PLAN 422A
47	PARALLEL CURB RAMP (CORNER) PER COS STD PLAN 422C
48	DIRECTIONAL CURB RAMP PER COS STD PLAN 422E
51	PERPENDICULAR CURB RAMP PER COS STD PLAN 422A WITH 8" THICK CONCRETE

GENERAL NOTES:

- SEE ROADWAY SECTIONS FOR PAVEMENT DEPTHS AND LIMITS OF CONCRETE CAP AND FILL BETWEEN BARRIERS.
- DIMENSIONS ARE MEASURED TO FACE OF BARRIER OR FACE OF CURB UNLESS NOTED OTHERWISE.
- SEE URBAN DESIGN SHEETS, LS SHEETS FOR DESIGN OF NON-MOTORIZED AREAS UNLESS NOTED OTHERWISE.
- SEE RETAINING WALL/PORTAL WALL PLANS, ST SHEETS, FOR RETAINING/PORTAL WALL DETAILS.
- SEE PAVING JOINT LAYOUT PLANS FOR PCC PAVEMENT JOINT DETAILS.
- LIMITS TO BE CONFIRMED IN FIELD. NEW SIDEWALK TO BE EXTENDED TO THE NEAREST EXISTING CONSTRUCTION/CONTRACTION JOINT.
- PROVIDE 2X2" SQUARE SAWCUT JOINTS. JOINTS TO ALIGN WITH THE DIRECTION OF PEDESTRIAN TRAVEL.
- SEE SHEETS PVD019 TO PVD025 FOR CURB RAMP GRADES.

SIDEWALK CROSS SLOPE SHALL NOT EXCEED 2% AT ANY POINT WITHIN THE PEDESTRIAN ACCESS ROUTE

DX 16+72.16 (75.1' LT.), EL. 65.64'	SIDEWALK PT
DX 16+85.45 (64.7' LT.), EL. 65.37'	END 29
DX 16+24.29 (56.8' LT.), EL. 65.35'	MATCH EXISTING SIDEWALK PRC
DX 16+21.26 (66.2' LT.), EL. 65.49'	SIDEWALK PRC
DX 15+98.28 (50.0' LT.), EL. 65.36'	SIDEWALK PRC
DX 15+96.29 (50.0' LT.), EL. 65.51'	SIDEWALK PRC
DX 15+65.04 (49.9' LT.), EL. 65.88'	SIDEWALK PRC
DX 15+67.26 (59.9' LT.), EL. 65.99'	SIDEWALK PRC
DX 15+62.17 (61.2' LT.), EL. 66.11'	SIDEWALK PCC
DXWI 21+71.93 (38.75' LT.)	RSOL DETAIL #1 SEE PVD019
DXWI 21+83.52 (2.0' RT.)	SEE LS SHEETS FOR DETAILS

DX 17+85.32 (69.6' RT.), EL. 67.63'	END 29
DX 17+85.40 (78.5' RT.), EL. 67.66'	MATCH EXISTING SIDEWALK AP
DX 17+82.77 (69.4' RT.), EL. 67.35'	SIDEWALK AP
DX 17+78.83 (67.1' RT.), EL. 67.33'	SIDEWALK AP
DX 17+31.01 (73.0' RT.), EL. 66.35'	SIDEWALK AP
DX 16+86.35 (72.5' LT.), EL. 65.36'	END 29
DX 16+72.16 (75.1' LT.), EL. 65.64'	SIDEWALK PT
DX 16+85.45 (64.7' LT.), EL. 65.37'	END 29
DX 16+24.29 (56.8' LT.), EL. 65.35'	MATCH EXISTING SIDEWALK PRC
DX 16+21.26 (66.2' LT.), EL. 65.49'	SIDEWALK PRC
DX 15+98.28 (50.0' LT.), EL. 65.36'	SIDEWALK PRC
DX 15+96.29 (50.0' LT.), EL. 65.51'	SIDEWALK PRC
DX 15+65.04 (49.9' LT.), EL. 65.88'	SIDEWALK PRC
DX 15+67.26 (59.9' LT.), EL. 65.99'	SIDEWALK PRC
DX 15+62.17 (61.2' LT.), EL. 66.11'	SIDEWALK PCC
DXWI 21+71.93 (38.75' LT.)	RSOL DETAIL #1 SEE PVD019
DXWI 21+83.52 (2.0' RT.)	SEE LS SHEETS FOR DETAILS

DX 17+85.32 (69.6' RT.), EL. 67.63'	END 29
DX 17+85.40 (78.5' RT.), EL. 67.66'	MATCH EXISTING SIDEWALK AP
DX 17+82.77 (69.4' RT.), EL. 67.35'	SIDEWALK AP
DX 17+78.83 (67.1' RT.), EL. 67.33'	SIDEWALK AP
DX 17+31.01 (73.0' RT.), EL. 66.35'	SIDEWALK AP
DX 16+86.35 (72.5' LT.), EL. 65.36'	END 29
DX 16+72.16 (75.1' LT.), EL. 65.64'	SIDEWALK PT
DX 16+85.45 (64.7' LT.), EL. 65.37'	END 29
DX 16+24.29 (56.8' LT.), EL. 65.35'	MATCH EXISTING SIDEWALK PRC
DX 16+21.26 (66.2' LT.), EL. 65.49'	SIDEWALK PRC
DX 15+98.28 (50.0' LT.), EL. 65.36'	SIDEWALK PRC
DX 15+96.29 (50.0' LT.), EL. 65.51'	SIDEWALK PRC
DX 15+65.04 (49.9' LT.), EL. 65.88'	SIDEWALK PRC
DX 15+67.26 (59.9' LT.), EL. 65.99'	SIDEWALK PRC
DX 15+62.17 (61.2' LT.), EL. 66.11'	SIDEWALK PCC
DXWI 21+71.93 (38.75' LT.)	RSOL DETAIL #1 SEE PVD019
DXWI 21+83.52 (2.0' RT.)	SEE LS SHEETS FOR DETAILS

FILE NAME: WTYLIPW01ICS01VCS_pdf_work_dh5831952421_613512_C9015_PS_PV_012.dgn	REGION NO: 10	STATE: WASH	FED. AID PROJ. NO.				SR 520 MONTLAKE TO LAKE WASHINGTON IC AND BRIDGE REPLACEMENT	PLAN REF. NO. PV012
TIME: 4:18:29 AM	DATE: 8/27/2020	DESIGNED BY: K. KOZAI	ENTERED BY: K. KOZAI					