

InRoads – Horizontal and Vertical Geometry to Trimble DC

Upload Trimble Application Add-In

Overview

The process for exporting InRoads horizontal and vertical alignments in a geometry file to the Trimble DC format uses the Upload Trimble Application Add-in.

NOTE: The **Trimble Link Engine** must be installed on the PC before creating the DC file. To check whether this application is installed, open the Windows Control Panel and select the **Add Remove Program** command. The **Trimble Link Engine** should be listed in the *Currently Installed* programs. If it is not listed, contact your local IT office and request a **Trimble Link Engine** installation.

Workflow

Load the **Upload Trimble** add-in. Open an InRoads geometry ALG file. Create a Trimble DC file containing horizontal and vertical alignments using the Upload Trimble dialog.

Load the Upload Trimble Add-in

1. Select the *Tools > Application Add-Ins* command.
2. Toggle on the **Upload Trimble** Add-In option.
3. Click **OK**.

Load the Geometry Project into InRoads

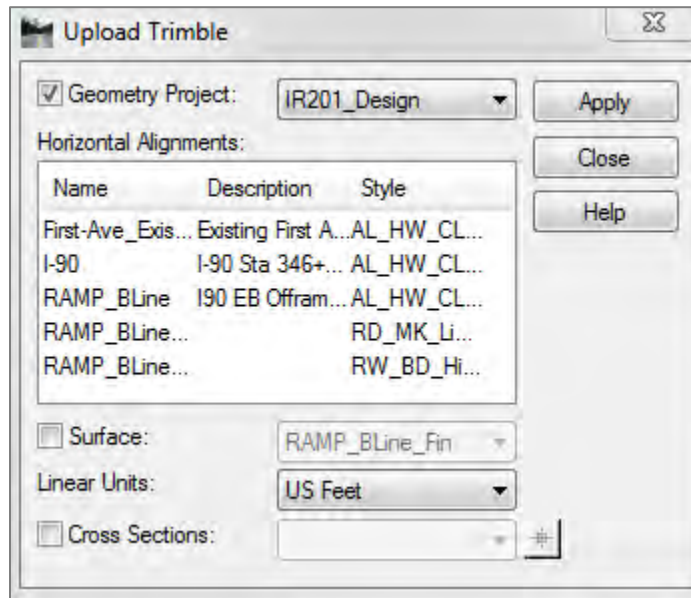
1. Select the *File > Open* command.
2. Set the *File Type* to **Geometry Project (*.alg)** if it is not already set to all InRoads file types.
3. Browse and select the geometry project with the alignment to be exported.
4. Set the vertical alignment to **Active** for the alignment that you want to export.
5. Verify that the horizontal alignment name does not use special characters like \ / : * ? " < > |. If so, rename the alignment.

Create the Trimble DC File

1. Select the *File > Translators > Upload Trimble* command.
2. Select **Geometry Project**.
3. Select the horizontal alignment to be exported.
4. Set the *Linear Units* to **US Feet**.
5. Click **Apply**.

The Save As dialog opens with the *Save as Type*: set to **Trimble DC file (*.dc)**.

NOTE: If the Save As dialog does not appear, verify that the **Trimble Link Engine** is installed.



6. Key in a file name or accept the default name.
7. Browse to the appropriate folder.
8. Click **Save**.

After the file is saved, another Save As dialog opens to save the **Trimble Tin Model (*.ttm)**.

9. Close the Save As dialog.

For questions or comments on this tech note, contact your regional CAE Support Coordinator or the WSDOT CAE Help Desk at (360) 709-**8013**.