

## MicroStation – Addendum Clouds

### Overview

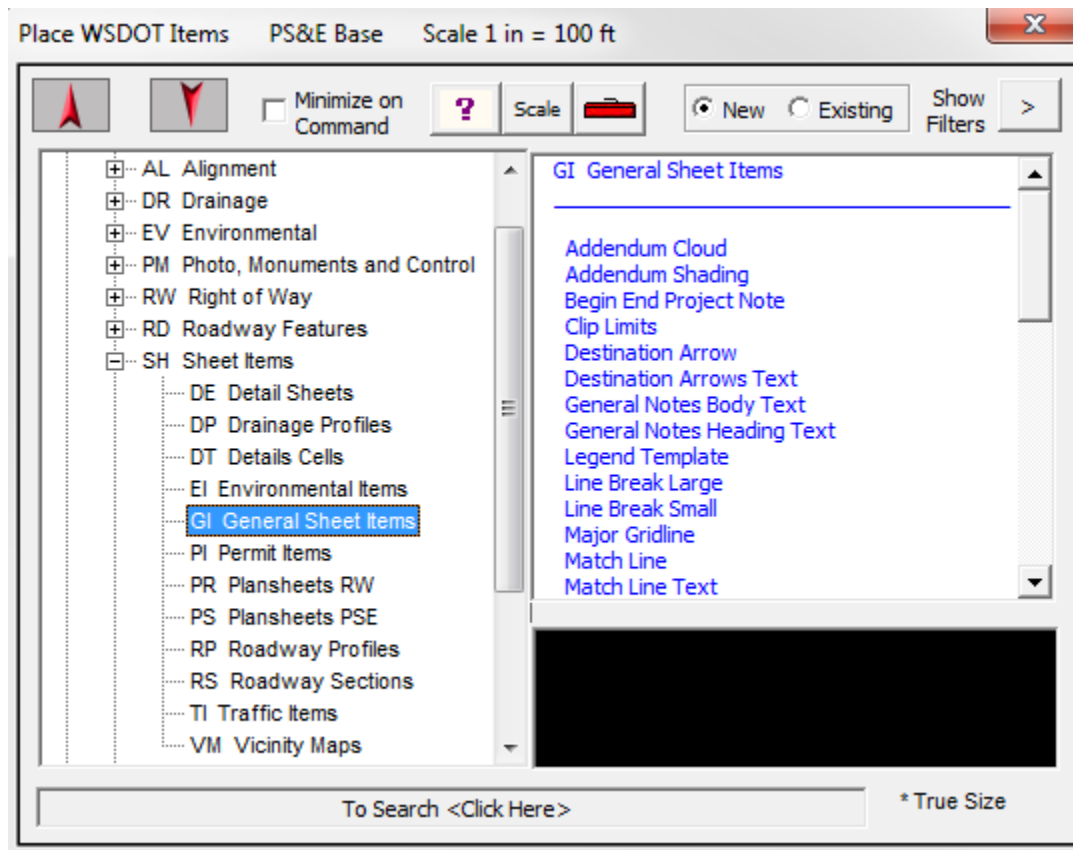
According to the December 2009 update of the Plans Preparation Manual, areas of plan sheet views impacted by addendum will be designated by cloud rather than shading. This change is to help in retaining clarity with plan sheets as they are reproduced. Addendum shading, when copied, will often become so light as to be indistinguishable or so dark that it overwhelms the data it is meant to indicate.

The WSDOT addendum cloud element, **SH\_GI\_AddendumCloud**, uses color 15, linestyle 0, and line weight of 5. Each arc will have a radius of 10 units with an arc angle of 145 degrees.

Manual drawing of addendum clouds is permitted as long as it adheres to the Plans Preparation requirements. However, this element is now included in the WSDOT CAE Expanded Levels environment. Be sure to check out the **Known Issues** topic below.

Title block and all tabular (tables, schedules, Structure Notes, Quantity Tabs, etc.) addendum changes will use the addendum shade.

Place the **SH\_GI\_AddendumCloud** element using the **WSDOT Menu**. This initiates the native MicroStation **Clouds By Points** tool defaulting to the appropriate settings.



Manual drawing can be accomplished by selecting **SH\_GI\_AddendumCloud** as the active level, opening the **Cloud** toolbox, selecting the **Cloud By Points** tool and entering in the appropriate settings and element attributes.

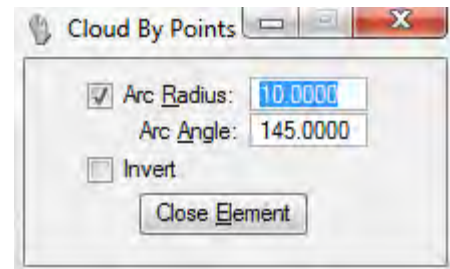
Revising an existing shape element to the addendum cloud may be done using the **Cloud by Element** tool.

### *Known issues*

#### **Element Info Impacts**

The cloud utility generates a single complex shape with MANY vertices. This may impact the amount of time it takes the **Element Selection** tool in to return the definition. The behavior will appear to 'hang' MicroStation and is consistent with selecting a group of elements with the Element Information dialog open.

Note that this tool may impact InRoads. If this occurs, contact your regional CAE Coordinator.



For questions or comments on this tech note, contact your regional CAE Support Coordinator or the WSDOT CAE Help Desk at (360) 709-8013.