

Seattle Terminal at →

# Colman Dock

→ by the numbers

July 2023

## BACKGROUND



CONSTRUCTION Begins Summer

2017

continues

INTO ↓ 2023



\$489 MILLION In Funding

from State & Federal Sources

More than

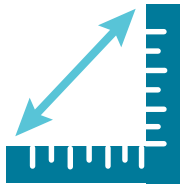
10,000,000 RIDERS ANNUALLY



KEY Partners

US Department of Transportation, Federal Transit Administration, King County, City of Seattle, ferry riders, Seattle waterfront stakeholders and several community groups

## TERMINAL BLDG.



20,026 SQUARE FEET  
1,900 OCCUPANCY



LIGHTER, BRIGHTER Interior with 4,230 SQUARE FEET OF WINDOWS



4 restrooms with 24 units

362 SEATS three times more than old building

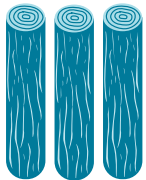


24 TURNSTILES 12 per route & 6 for ADA PASSENGERS



1,400 cubic yards of concrete poured for the NEW terminal BUILDING

## TRESTLE

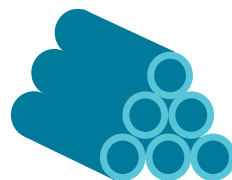


7,500 TONS of CREOSOTE-treated wood removed from THE WATER

611 VEHICLE HOLDING SPACES



185 MORE THAN OLD TERMINAL



INSTALLED 500 NEW steel SUPPORT PILES

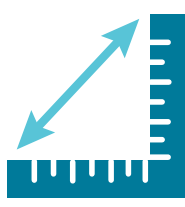


PLACED → 772 pre-cast CONCRETE panels ←



12,000 CUBIC YARDS of concrete for TRESTLE holding Lanes

**ENTRY BUILDING**



**10,000**  
SQUARE FEET  
**PUBLIC SPACE**



**3**  
staircases



**2**  
elevators  
from Alaskan Way



**ADA**  
FEATURES  
Tactile pavers,  
turnstiles,  
drop off area\*  
\*When Alaskan Way opens




**3**  
restrooms



**3** facing  
holding  
**LANES**

**PEDESTRIAN CONNECTOR**



**20,500**  
SQUARE FEET  
**PUBLIC SPACE**



**10**  
benches  
To enjoy the view



**3**  
TICKETS  
ticket  
BOOTHs



**2** automatic ticket  
**kiosks**



**7** digital  
displays



**7** with  
route  
information

**OVERALL**



**4**  
elevators  
2 on Alaskan Way  
2 at passenger-  
only ferry



**10**  
food/retail  
spaces  
Opening soon



**2**  
Tribal-named  
**PLAZAS**

FROM **Muckleshoot & Suquamish** TRIBES

**Title VI Notice to Public**

It is the Washington State Department of Transportation's (WSDOT) policy to assure that no person shall, on the grounds of race, color, national origin, as provided by Title VI of the Civil Rights Act of 1964, be excluded from participation in, be denied the benefits of, or be otherwise discriminated against under any of its programs and activities. Any person who believes his/her Title VI protection has been violated, may file a complaint with WSDOT's Office of Equity and Civil Rights (OECR). For additional information regarding Title VI complaint procedures and/or information regarding our non-discrimination obligations, please contact OECR's Title VI Coordinator at (360) 705-7090.

**Americans with Disabilities Act (ADA) Information**

This material can be made available in an alternate format by emailing the Office of Equity and Civil Rights at [wsdotada@wsdot.wa.gov](mailto:wsdotada@wsdot.wa.gov) or by calling toll free, 855-362-4ADA(4232). Persons who are deaf or hard of hearing may make a request by calling the Washington State Relay at 711.