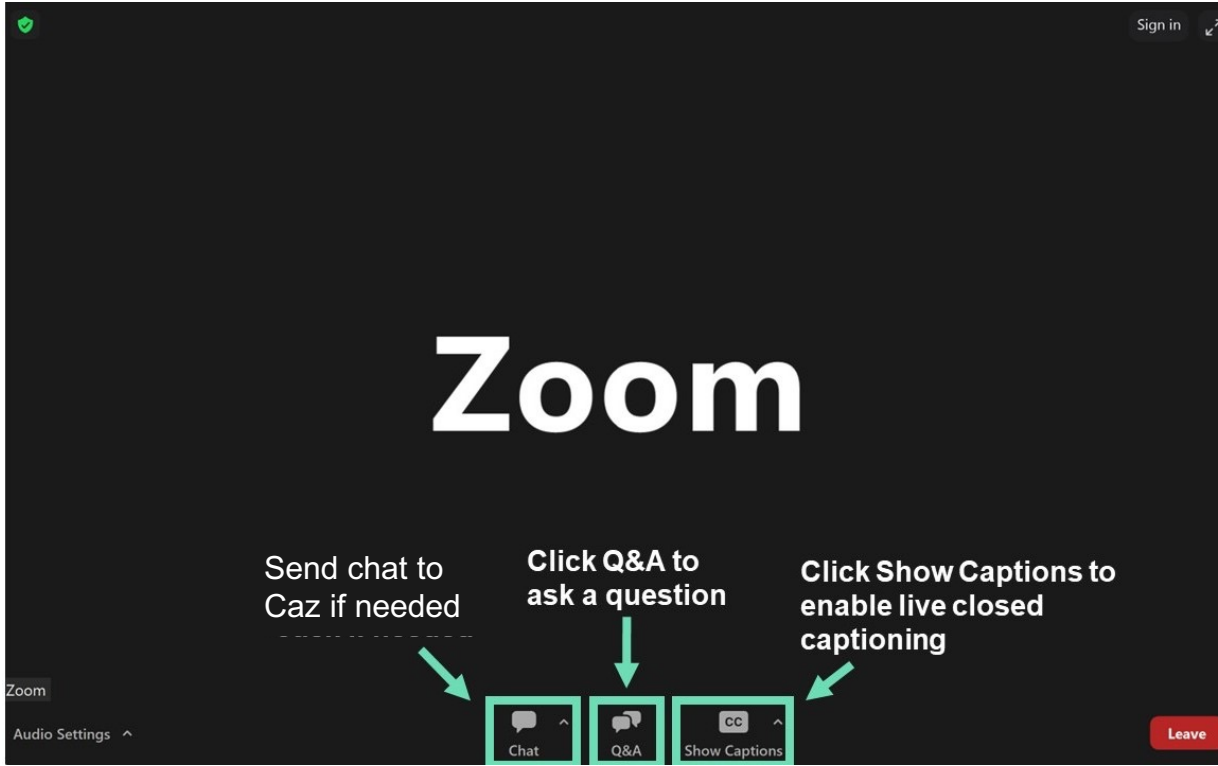


SR 167 Corridor Improvements Project

Project Updates

March 2024

This meeting is being recorded. The recording will be sent to meeting registrants via email and posted on the project webpage.



Caz is our meeting host

Please use the chat feature to message Caz or call him if you have any technical difficulties:

253-220-5053

Welcome & Introductions

- Matt DeGooyer & Curtis Peterson, Northup Constructors
- Eugene Pike, WSDOT Assistant Project Engineer
- Craig Smiley & Julie Moon, WSDOT Communications
- Francis Choe, Northup Constructors Communications

Poll Question

Before we start, we want to hear from you

Project Overview and Benefits

Project Updates

- Project Schedule (2024 – 2025)
- What's completed or in-progress? What's next?
- What you can expect during construction

Keeping the Community Informed

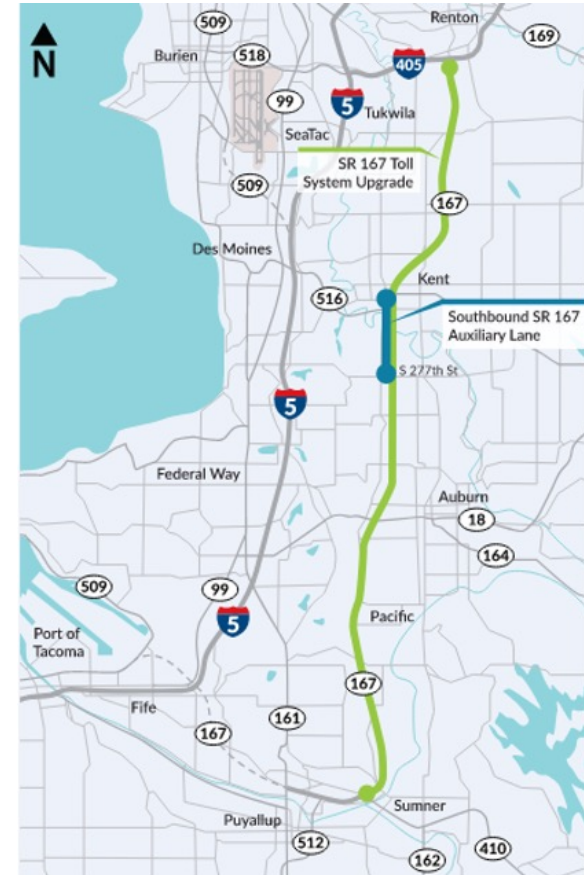
- Outreach efforts
- Real-time travel map and app

Stay in Touch!

Q&A

Project Overview and Benefits

- Upgrade the toll system on SR 167 from the existing HOT Lane system to a new Express Toll Lane (ETL) system to mirror the active system in place on I-405 (Bellevue to Lynnwood).
 - Implement photo tolling and destination pricing.
 - Install new toll rate signs consistent with the I-405 ETL system.
 - Re-stripe SR 167, including installation of double white line buffer stripes in select areas.
- Construct a new Southbound Auxiliary Lane in Kent between SR 516 and S. 277th Street to improve traffic operations and smooth out heavy merging and diverging vehicles in this area.
- Install Toll Gantries and Sign Structures (cantilevers, full-span directional, full-span SR 167), as well as new static and dynamic signs throughout the corridor.
- Bridge deck overlay (one bridge deck).



- Creates a 40-mile express toll lane (ETL) system from Lynnwood to Puyallup at the completion of this Project and the Renton to Bellevue Project.
- Replaces the original toll system on SR 167, updating the functionality to match the toll system on the I-405 ETLs.
- Provides a southbound auxiliary lane in Kent between SR 516 and South 277th Street to improve traffic operations and smooth out heavy merging and diverging vehicles in this area.

- Contract Execution: August 2023
- Notice to Proceed: September 6, 2023
 - Design: September 2023 through May 2024
 - Early Subsurface Investigation: October 2023 through March 2024
 - Construction Start: April/May 2024
- Toll Infrastructure Completion: April 2025
- Toll Commencement: September 2025
 - Decommissioning Start: September 2025
- Substantial Completion: January 2026
 - Decommissioning Complete: January 2026

Project Updates

2024

Design:

- Complete all design plans and specifications.
- Complete subsurface investigation work to support design.

Construction:

- Construct the tolling power and communications infrastructure throughout the corridor.
- Construct the bridge deck overlay.
- Construct project signs.
- Erect sign bridge structures.
- SR 167 grind and overlay (asphalt improvements)

2025

Construction:

- Support the Toll Vendor in hanging toll support brackets and equipment.
- Test and install all electronic signs and any remaining static signs.
- Open the southbound auxiliary lane.

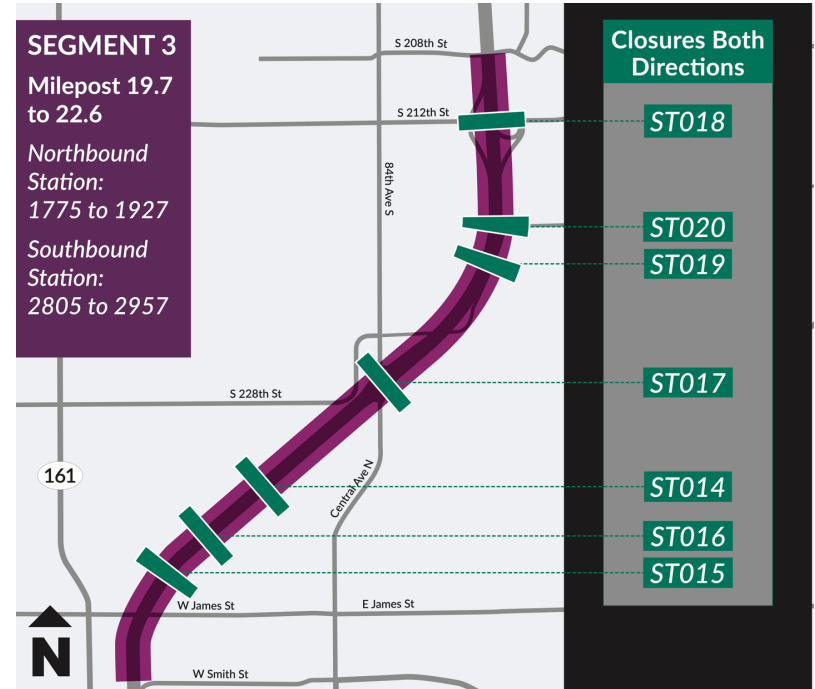
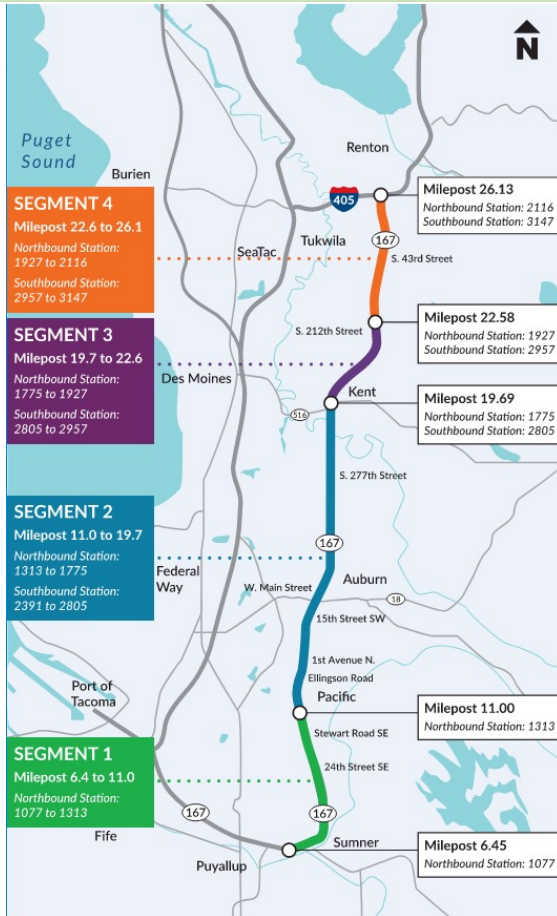
Tolling:

- Roll out the new Express Toll Lane system.

Decommissioning:

- Decommission the old toll system and remove all tolling components.

Project Segment Map



- ✓ Completed:
 - ✓ Subsurface investigation to support design
 - ✓ Design survey
- In-Progress:
 - Construction survey
 - Wetland delineation and temporary erosion and sediment control measures (orange & black fence)
 - Preparing for the start of construction in the coming months



- Different types of equipment and work result in different types of construction impacts:
 - Noise
 - Vibration
 - Nighttime lane, ramp, and SR 167 closures
 - Daytime shoulder closures of SR 167
- Expect to see crews both days and nights during weekdays with weekend work to set major sign bridge structures.
- Crews will work typical day and/or night shifts, with day shifts being optimized to daylight hours when possible.
- Stakeholder engagement up and down the corridor with local agencies, counties, and transit entities.

- Road signs near work zones
- Mailed materials and information
- Email and website updates
- Quarterly project updates on Zoom



I405SR167Program@wsdot.wa.gov



425-456-8585 (general program information)
253-220-5053 (project hotline)



<https://bit.ly/167-Completion>



Stay informed by subscribing to email updates.

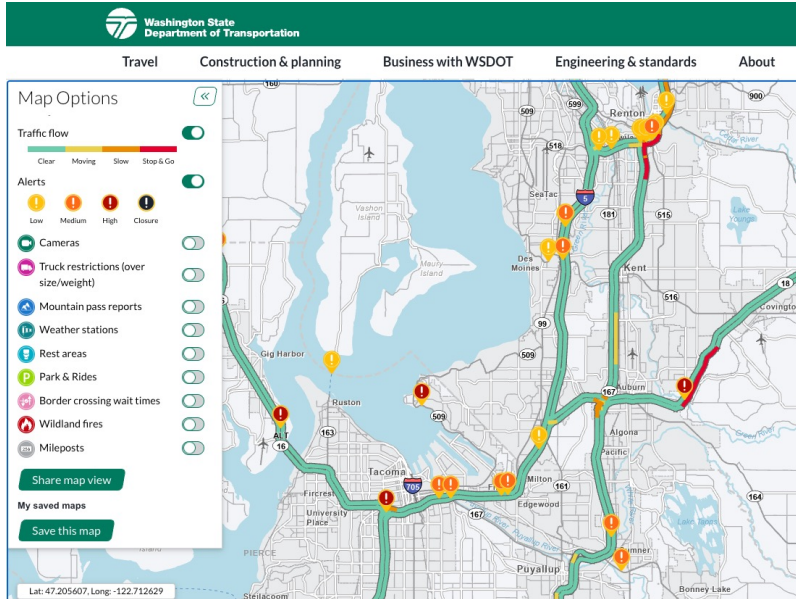
Updates include:

- Closures
- Nighttime or other potentially disruptive work
- Changes in work hours
- Construction milestones



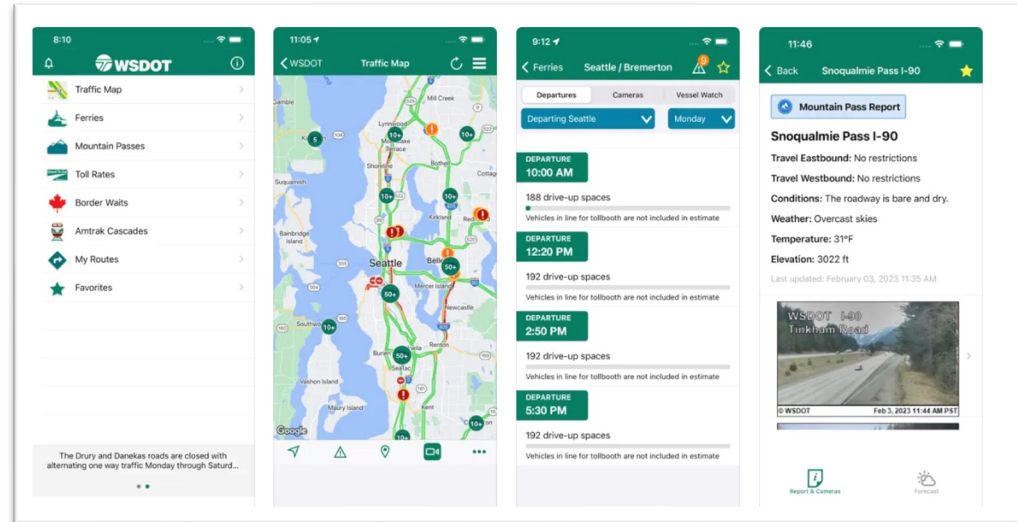
Real time travel map

<http://wsdot.com/travel/real-time>



WSDOT mobile app

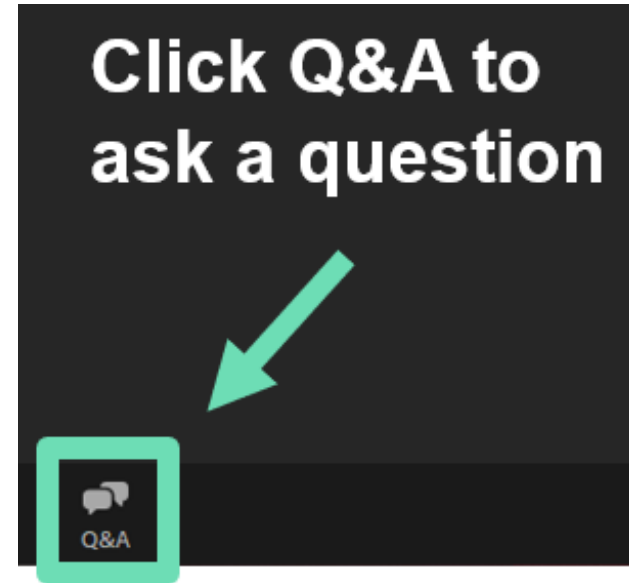
Search **WSDOT** in [Google play](#) or [the App Store](#) to download the **WSDOT** app.



Questions, comments, or concerns?

Submit a question via Zoom Q&A window

- Keep questions focused on this project
- Please submit your questions as short, complete sentences (*this helps us read out the questions*)
- Questions specific to an individual situation can be difficult to answer now. After the meeting, you can call or email our team to get these questions answered. We are here to help!



425-456-8585 (general program info.)
253-220-5053 (project hotline)



I405SR167Program@wsdot.wa.gov



<https://bit.ly/167-Completion>

Thank you for
joining us today!